

Born from the latest innovation, the new optical chromatic confocal optical head Everest K1 harbors the best optical research and development has to offer.

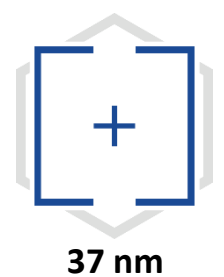
**Slope Angle**



**Accuracy**



**Resolution**



DESIGNED FOR

**Micromechanics**



**Semiconductors**



**Aerospace**



**Metrology**



PERFECT FOR

**Distance**



**Roughness**



**Thickness**

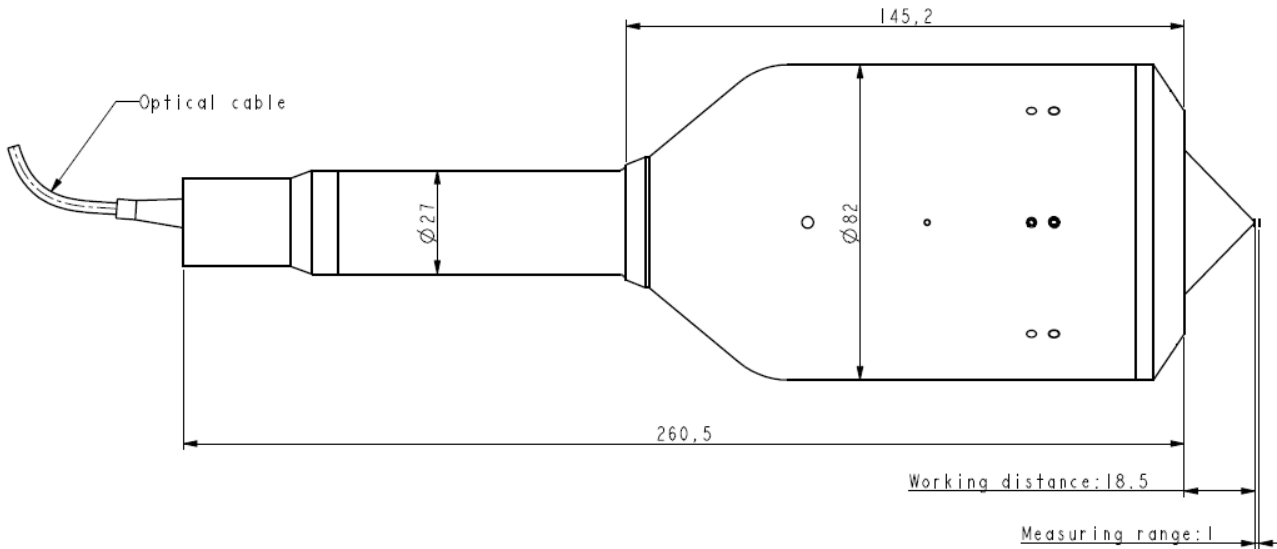


**Displacement**





## DIMENSIONAL DRAWING



## SPECIFICATIONS

Specifications		Test on CCS Prima Controller
Measuring range	µm	1000
Working distance	mm	18,5
Maximum sample slope	deg	± 44°
Accuracy (max. linearity error)	nm	75
Axial resolution	nm	37
Spot size (diameter)	µm	5
Numerical Aperture (N.A.)		0.7
Minimum thickness measurement	µm	50
Dimensions		
Length	mm	260,5
Diameter	mm	82
Weight	g	1400