



STIL Product Portfolio



Chromapoint displays STIL original technology and places itself as the outfit bestselling sensor. It provides high-performances on all types of materials while being easy-to-use and integrate.

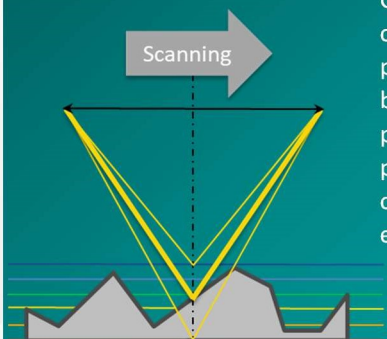


Chromaline is a natural evolution from STIL Chromapoint and is available in two models: Chromaline Sensor with 180 discrete measuring points placed on a single line and Chromaline Camera for inspection and control applications with very high-resolution and extended depth of field.



Chromafield represents the optimization of customizable measuring solutions. It encompasses several measuring points placed in a specific pattern depending on the need of the application.

STIL Chromatic Confocal Line



Chromapoint displays STIL original technology and places itself as the outfit bestselling sensor. It provides high-performance on all types of materials while being easy-to-use and integrate.

Perfect focus everywhere
on product surface

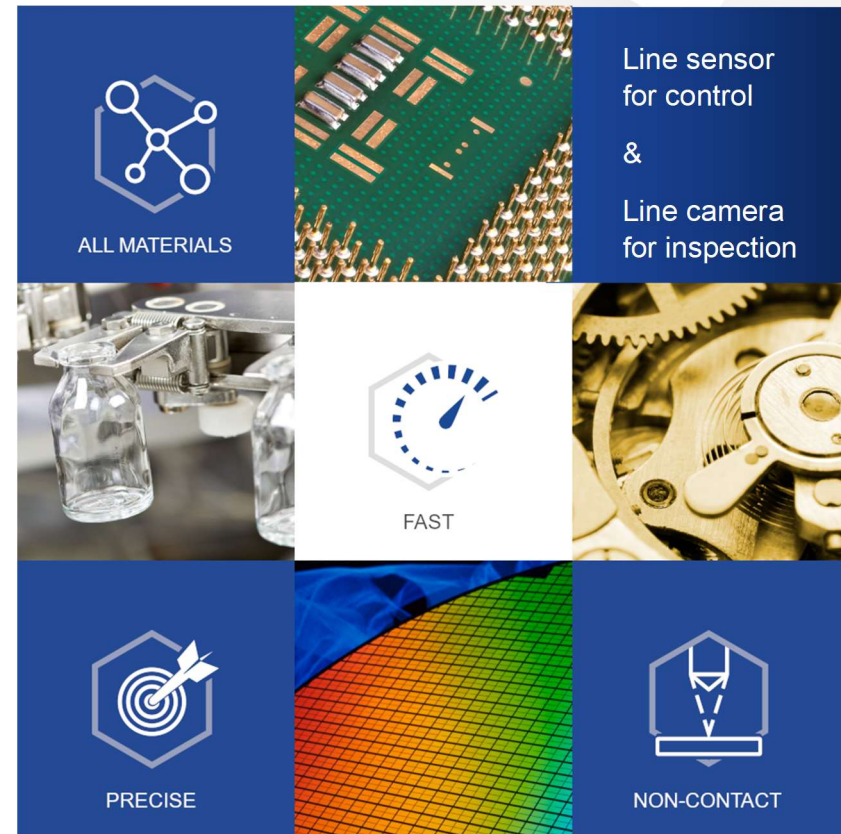
STIL
MARPOSS

T. +33 (0)4 42 39 66 51
info@stil-sensors.com

STIL S.A.S.
595, rue Pierre Berthier
Domaine de Saint Hilaire
13855 Aix-en-Provence cedex 3
FRANCE

www.stil-sensors.com

CHROMALINE LINE SENSORS

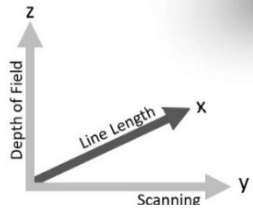


STIL
MARPOSS

CHROMALINE CAMERA *for inspection*



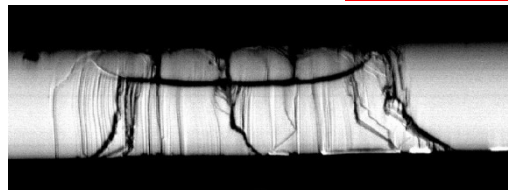
2.5D



- + Coaxial Acquisition
- + Integrated Lighting
- + Camera Interface
- + 4K Resolution
- + Up to 80 kHz

| | | | | | NEW |
|--------------------|-----------------|-----------|-----------|----------|-----------|
| MC2 | | NanoView | MicroView | DeepView | SuperView |
| Line Length | mm | 1.35 | 1.80 | 4 | 12.5 |
| Depth of Field | mm | 0.1 | 0.5 | 2.6 | 2.0 |
| Working Distance | mm | 4.6 | 10.1 | 47.8 | 12.5 |
| Pixel Size | μm ² | 0.41x0.41 | 0.54x0.54 | 1.2x1.2 | 3.82x3.82 |
| Slope Angle | Deg | ± 40 | ± 30 | ± 20 | ± 19 |
| Numerical Aperture | | 0.7 | 0.5 | 0.35 | 0.32 |

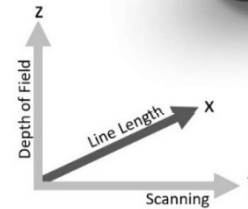
- 1mm glass edge Inspection
- 2D B&W Image



CHROMALINE SENSOR *for measurement*



3D



- + Coaxial Acquisition
- + Integrated Lighting
- + Ethernet interface
- + 180 Measuring Points
- + Up to 10 kHz

| | | | | | NEW |
|----------------------|-----|----------|----------|-----------|----------|
| MPLS | | NanoView | WireView | MicroView | DeepView |
| Line Length | mm | 1.34 | 1.51 | 1.79 | 4.05 |
| Measuring Range | mm | 0.1 | 0.9 | 0.5 | 2.6 |
| Working Distance | mm | 4.6 | 7.8 | 10.1 | 47.8 |
| Pitch (2 points) | μm | 7.4 | 8.4 | 10 | 22.4 |
| Slope Angle | Deg | ± 40 | ± 46 | ± 30 | ± 20 |
| Non Linearity (Max.) | nm | 50 | 100 | 80 | 150 |

- 1mm glass edge Measurement
- 3D Profile

